

SPECIAL ARTICLE

Myelodysplastic syndromes: ESMO Clinical Practice Guidelines for diagnosis, treatment and follow-up[†]☆

P. Fenaux^{1,2}, D. Haase³, V. Santini⁴, G. F. Sanz^{5,6}, U. Platzbecker⁷ & U. Mey⁸, on behalf of the ESMO Guidelines Committee*

¹Service d'Hématologie Clinique, Groupe Francophone des Myélodysplasies (GFM), Department of Hematology, Hôpital St. Louis (Assistance Publique, Hôpitaux de Paris), Paris; ²Paris 7 University, Paris, France; ³Department of Hematology and Medical Oncology, University Medical Center, Göttingen, Germany; ⁴MDS Unit, Haematology, AOU Careggi, University of Florence, Florence, Italy; ⁵Department of Haematology, Hospital Universitario La Fe, Valencia; ⁶Centro de Investigación Biomédica en Red de Cáncer, CIBERONC, Instituto de Salud Carlos III, Madrid, Spain; ⁷Department of Hematology and Cellular Therapy, Medical Clinic and Policlinic 1, University Hospital Leipzig, Leipzig, Germany; ⁸Department of Oncology and Haematology, Kantonsspital Graubünden, Chur, Switzerland



Available online 19 November 2020

Key words: Myelodysplastic syndromes, Clinical Practice Guidelines, diagnosis, treatment, follow-up

INCIDENCE AND EPIDEMIOLOGY

Myelodysplastic syndromes (MDS) are clonal haematopoietic stem cell (HSC) disorders predominating in the elderly, characterised by ineffective haematopoiesis leading to blood cytopenias and progression to acute myeloid leukaemia (AML) in one-fourth to one-third of cases.¹ Their pathophysiology is characterised by a multi-step process involving cytogenetic changes and/or gene mutations,² abnormalities of the bone marrow microenvironment³ and widespread gene hypermethylation at advanced stages.^{4,5}

Median age at diagnosis of MDS is ~70 years and <10% are younger than 50 years.⁶ The incidence of MDS is about 4 cases/100 000 inhabitants/year (reaching 40-50/100 000 in patients aged ≥70 years).⁶ There are no known ethnic differences in the incidence of MDS, but in Asian populations, MDS tends to occur at an earlier age, more often with a hypocellular marrow and less often with isolated 5q deletion ('5q-syndrome'). Trisomy 8 also seems to occur more frequently in Asian populations compared with Western populations.⁷

The aetiology of MDS is only known in 15% of cases. An inherited predisposition to MDS is seen in one-third of paediatric MDS patients, including Down syndrome, Fanconi anaemia and neurofibromatosis. It is less frequent in adults, but an inherited predisposition should be assessed in MDS occurring in young adults or families with other

cases of MDS, AML or aplastic anaemia. Point mutations of several genes including *DDX 41*, *GATA2*, *RUNX 1*, *ANKRD 26*, *ETV6* and telomerase complex genes (*TERC*, *TERT*) have been found in such familial cases.⁸ Environmental factors include previous exposure to chemotherapy (ChT), especially alkylating agents and purine analogues,⁹ radiotherapy (RT) or ionising radiation^{10,11} and tobacco smoking.¹² Recognised occupational factors include benzene and its derivatives,¹³ and more cases of MDS are reported among agricultural and industrial workers.^{12,14} Cases of 'secondary MDS', particularly those occurring after ChT (therapy-related MDS), generally have poor prognostic factors, including complex cytogenetic findings involving chromosomes 5 and/or 7 and/or 17p.¹⁵

DIAGNOSIS AND PATHOLOGY/MOLECULAR BIOLOGY

Diagnosis of MDS is based on blood and bone marrow examination, showing blood cytopenias, generally hypercellular (but sometimes hypocellular) marrow with dysplasia, with or without an excess of blasts.¹⁶

Well-established diagnostic tools for MDS with widespread availability are peripheral and differential blood counts, cytomorphology of peripheral blood and bone marrow smears and cytogenetics of bone marrow cells [I, A]. At diagnosis, histology of bone marrow trephine biopsies is strongly recommended, especially to exclude other causes of cytopenia and because of its potential prognostic information [I, A]. In difficult cases, such as cytopenias with unspecific morphological changes and no cytogenetic changes, molecular analysis by next generation sequencing techniques to demonstrate clonality [I, A] and, in experienced hands, flow cytometry of blood and marrow cells can be useful for diagnosis [II, B].

Differential diagnoses of MDS include a history of medication or ingestion of alcohol or other drugs and exclusion

*Correspondence to: ESMO Guidelines Committee, ESMO Head Office, Via Geneva 4, CH-6900 Lugano, Switzerland
E-mail: clinicalguidelines@esmo.org (ESMO Guidelines Committee).

†Approved by the ESMO Guidelines Committee: August 2019, last update May 2020.

☆Note: This publication supersedes the previously-published version – *Ann Oncol* 2014;25(3):iii57-iii69.

0923-7534/© 2020 European Society for Medical Oncology. Published by Elsevier Ltd. All rights reserved.

of other diseases, including autoimmune disorders, renal failure, malignancies, chronic infections, aplastic anaemia and paroxysmal nocturnal haemoglobinuria (PNH).¹⁷

MDS should be classified according to the World Health Organization (WHO) criteria¹⁶ with prognosis established by the international prognostic scoring system (IPSS)¹⁸ or rather, its revised version (IPSS-R).¹⁹ Prognosis is based on the marrow blast percentage, number and extent of cytopaenias, and cytogenetic abnormalities, which are grouped in the IPSS-R.^{18,19} Treatment varies from symptomatic therapy for cytopaenias, especially transfusions, to allogeneic stem cell transplantation (allo-SCT).

Peripheral blood counts and differential blood counts

Almost all patients with MDS have blood cytopaenias, mostly anaemia (usually macrocytic) with or without other cytopaenias.

Laboratory parameters

Laboratory values supporting or excluding the diagnosis of MDS are ferritin, transferrin and transferrin saturation, reticulocyte counts, vitamin B12 and folate concentrations, haptoglobin, and creatinine levels. They can exclude the differential diagnoses of iron deficiency anaemia, haemolytic anaemia, vitamin B12 or folate deficiency and renal anaemia. If MDS is diagnosed, ferritin and lactate dehydrogenase (LDH) also have some prognostic value, and the erythropoietin (EPO) level can support a decision for or against treatment with erythropoiesis-stimulating agents (ESAs). Diagnostic work-up for PNH may be considered in cases with a clinical suspicion as small PNH clones can accompany MDS.

Cytomorphology

The hallmarks of cytomorphology in MDS are dysplastic features in $\geq 10\%$ of marrow and/or peripheral blood cells of erythroid, granulocytic or megakaryocytic lineage. Marrow histology of trephine biopsies is of additional value.

In early MDS with only mild morphological abnormalities, certain cases with persistent, unexplained cytopaenias are called idiopathic cytopaenias of uncertain significance (ICUS). In patients with marrow dysplastic features but no or very mild peripheral blood cytopaenias and normal karyotype, idiopathic dysplasia of unknown significance (IDUS)²⁰ can be diagnosed if no other cause of dysplasia is apparent (see Table 1). Patients with clonal somatic mutations and cytopaenias without dysplastic features and normal karyotype [clonal cytopaenias of uncertain significance (CCUS)] constitute a third group of patients with a higher risk of progression to MDS.^{21,22}

When evaluating MDS blood films and marrow slides, certain cytological abnormalities should be considered (see Table 2). For an MDS diagnosis, the recommended number of cells to be reviewed per slide is 200 for the blood film and up to 500 for bone marrow.²³ The marrow blast count is crucial given its important prognostic value. 'Blasts' should include agranular blasts, myeloblasts and promonocytes but

Table 1. Definition of ICUS, IDUS, CHIP and CCUS^{21,22}

Characteristics	
ICUS	<ul style="list-style-type: none"> Mild cytopaenia for at least 4 months (haemoglobin < 11.0 g/dl, neutropaenia $< 1500/\mu\text{l}$ and/or thrombocytopaenia $< 100\,000/\mu\text{l}$) No or only mild ($< 10\%$) marrow dysplasia Marrow blasts $< 5\%$ No clonal cytogenetic or molecular markers Exclusion of other diseases
IDUS	<ul style="list-style-type: none"> No significant cytopaenia (i.e. haemoglobin ≥ 11 g/dl, neutrophils $\geq 1500/\mu\text{l}$ and platelets $\geq 100\,000/\mu\text{l}$) Marked dysplasia in $> 10\%$ of neutrophilic and/or erythroid and/or megakaryocytes lineages Marrow blasts $< 5\%$ No clonal cytogenetic or molecular markers
CHIP	<ul style="list-style-type: none"> No significant cytopaenia No or only mild ($< 10\%$) dysplasia Marrow blasts $< 5\%$ Presence of one or more MDS-related mutation(s) Clonality defined by mutation of myeloid disorder associated genes (including particularly <i>DNMT3A</i>, <i>ASXL1</i>, <i>TET2</i>, <i>JAK2</i> and <i>TP53</i> genes), with a VAF of between 2% and 30%
CCUS	<ul style="list-style-type: none"> Cytopaenia for at least 4 months (haemoglobin < 11.0 g/dl and/or neutropaenia $< 1500/\mu\text{l}$ and/or thrombocytopaenia $< 100\,000/\mu\text{l}$) No or only mild ($< 10\%$) marrow dysplasia Marrow blasts $< 5\%$ Presence of one or more MDS-related mutation(s) Clonality defined by mutation of myeloid disorder associated genes (including particularly <i>DNMT3A</i>, <i>ASXL1</i>, <i>TET2</i>, <i>JAK2</i> and <i>TP53</i> genes), with a VAF of between 2% and 30%

CCUS, clonal cytopaenias of uncertain significance; CHIP, clonal haematopoiesis of indeterminate potential; ICUS, idiopathic cytopaenias of uncertain significance; IDUS, idiopathic dysplasia of unknown significance; MDS, myelodysplastic syndromes; VAF, variant allele frequency.

not promyelocytes. Staining for iron with Prussian blue (Perls stain) should always be carried out in lower-risk MDS in order to evaluate the presence of ring sideroblasts.

Table 2. Signs of dysplasia in myelodysplastic syndromes

Peripheral blood	
<ul style="list-style-type: none"> Granulocytes Platelets Red cells 	Pseudo Pelger-Huet cells, abnormal chromatin clumping, hypo-/degranulation, left shift Giant platelets, anisometry of platelets Anisocytosis, poikilocytosis, dimorphic erythrocytes, polychromasia, hypochromasia, megalocytes, basophilic stippling, presence of nucleated erythroid precursors, tear drop cells, ovalocytes, fragmentocytes
Bone marrow	
<ul style="list-style-type: none"> Cellularity of the marrow Erythropoiesis Megakaryopoiesis Granulocytopenia 	Typically hypercellularity, rarely hypocellularity Megaloblastoid changes, multinuclearity, nuclear budding, non-round nuclei, karyorrhexis, nuclear bridges, atypical mitoses, sideroblastosis, ring sideroblasts, periodic acid-Schiff-positive red cell precursors Micromegakaryocytes, mononuclear megakaryocytes, dumbbell-shaped nuclei, hypersegmentation, multinuclearity with multiple isolated nuclei Left shift, increased medullary blast count, Auer rods or Auer bodies, hypo-/degranulation, pseudo-Pelger cells, nuclear anomalies (e.g. hypersegmentation, abnormal chromatin clumping), deficiency of myeloperoxidase, increase and morphological abnormality of monocytes

Histopathology

In the European Union (EU), contrary to the United States, MDS are mainly followed-up by bone marrow aspirate rather than biopsy. Bone marrow trephine biopsy, however, is useful at diagnosis to assess cellularity and fibrosis. In case of hypocellular aspirates or dry puncture, it allows a diagnosis of hypoplastic MDS or fibrotic MDS. It may also exclude other differential diagnoses and may provide additional information on dysplastic features (mainly of megakaryocytes) and prognostic information, especially by showing fibrosis. It is therefore strongly recommended in addition to bone marrow aspiration at diagnosis.^{24,25}

Cytogenetics

In MDS, clonal chromosome abnormalities are observed in 30% to >80% of patients.²⁶ In the remaining 20%-70% of patients with a normal karyotype, sub-microscopic alterations such as point mutations, microdeletions or

amplifications, epigenetic changes or copy number neutral loss such as uniparental disomy (UPD) provide the genetic basis for the disease.^{2,27} Currently, standard karyotype still has the highest prognostic value of all IPSS-R parameters.¹⁹

Chromosome banding analysis is carried out on dividing metaphase cells. Whenever possible, 20-25 metaphases should be analysed so as not to miss smaller cell clones that are frequent, especially in low-risk MDS. Complex abnormalities are defined as three or more independent abnormalities in at least two metaphases.²⁸ Cytogenetic analysis should follow minimal standards fixed by the 'Workpackage Cytogenetics' of the European LeukemiaNet (see Figure 1).²⁹

In an international database of 2124 patients with MDS, 52% had one or more clonal cytogenetic abnormalities. Abnormal karyotypes were clearly associated with the severity of MDS, increasing with marrow blast count and the intensity of dysplasias.²⁶

Several independent studies have proven the dismal outcome related to complex abnormalities.^{26,30,31} Complex

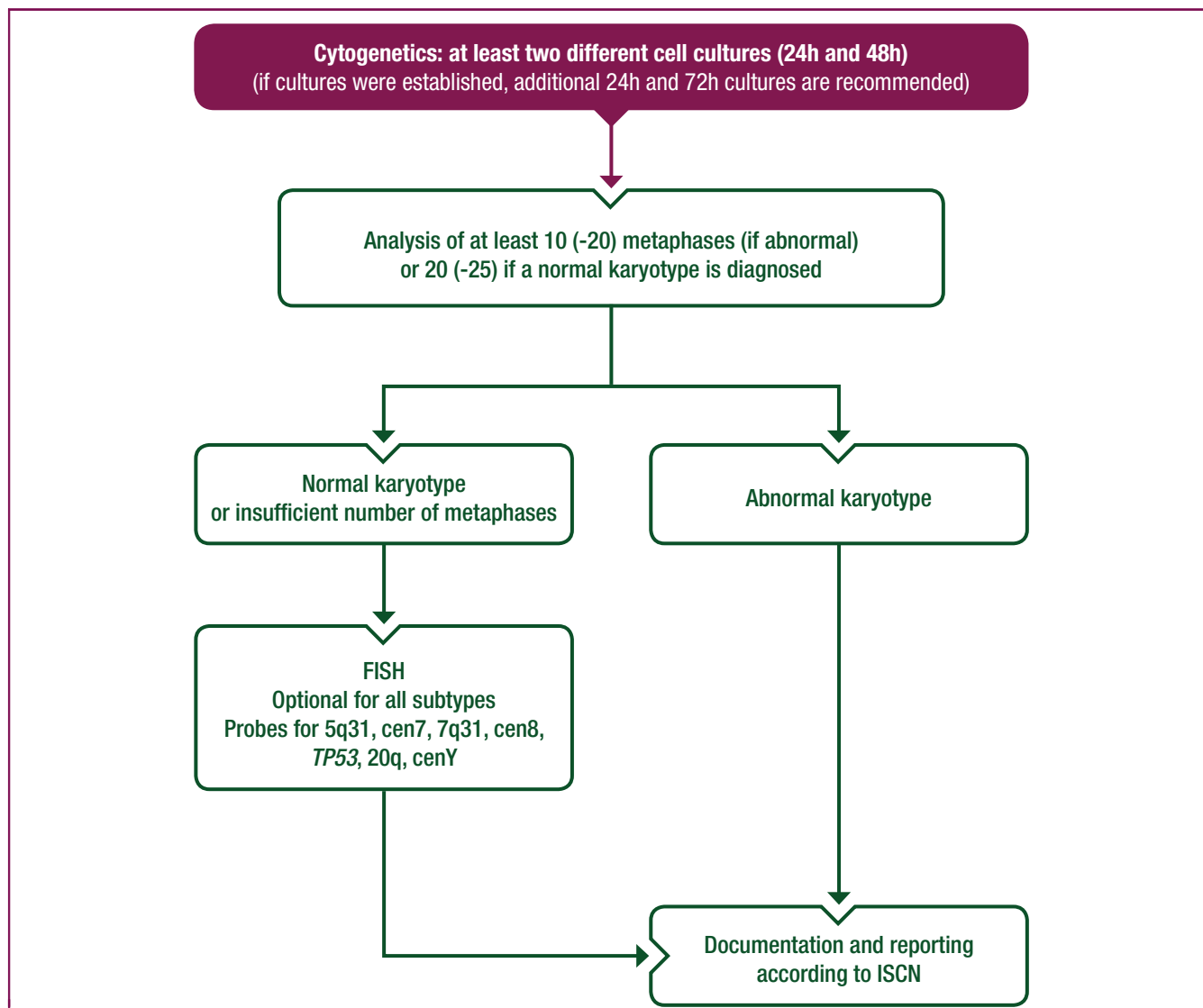


Figure 1. Recommended standard algorithm for cytogenetic analysis in MDS.²⁹

FISH, fluorescence *in situ* hybridisation; ISCN, International System for Human Cytogenetic Nomenclature; MDS, myelodysplastic syndromes.

Table 3. Most frequent somatic mutations observed in MDS^{a,35,36}

Gene function	Gene	Mutation frequency (%)
Epigenetic regulators and chromatin-remodelling factors	<i>TET2</i>	15-25
	<i>ASXL1</i>	10-20
	<i>DNMT3A</i>	10
	<i>IDH1/2</i>	5-10
Pre-mRNA splicing factors	<i>SF3B1</i>	15-30
	<i>SRSF2</i>	10-15
	<i>U2AF1</i>	5-10
Transcription factors	<i>RUNX1</i>	10-15
	<i>TP53</i>	5-10
Signalling molecules	<i>NRAS/KRAS</i>	10
Cohesin complex	<i>STAG2</i>	5-7

MDS, myelodysplastic syndromes.

^a Other mutations are seen in <5% of cases.

abnormalities can be further subdivided by the presence or absence of *TP53* mutations, the number of cytogenetic changes and severe anaemia.³²

Assessing karyotype during follow-up is also useful as cytogenetic progression is associated with poorer prognosis, while cytogenetic response after a given treatment may be associated with a better outcome.^{31,33,34}

Molecular genetics

Acquired molecular mutations are seen in 80%-90% of MDS patients,^{35,36} affecting epigenetic regulation and chromatin-remodelling (*TET2*, *DNMT3A*, *ASXL1*, *IDH1/2*, *EZH2*), pre-mRNA splicing factors (*SF3B1*, *SRSF2*, *U2AF1*), transcription (*TP53*, *RUNX1*) and signal transduction (*NRAS*, *CBL*), and can demonstrate clonal disease (Table 3). The most frequent mutations (each present in >10% of patients) affect *TET2*, *SF3B1*, *ASXL1*, *SRSF2*, *DNMT3A* and *RUNX1*, but approximately one or more of around 30 genes are mutated in >1% of patients. Forty percent of patients have more than one mutation. Most mutations, except *SF3B1*, carry a poor prognosis, and prognosis is worse with a larger number of mutations.³⁵ Molecular profiling can also be a valuable diagnostic tool if MDS is uncertain in ICUS or IDUS,³⁷ but mutations have limited impact on the clinical management in most cases. Exceptions are *SF3B1* mutation in lower-risk MDS (associated with a favourable prognosis and likely to respond to luspatercept) and *TP53* mutation in lower-risk MDS with del(5q), associated with an increased risk of leukaemic transformation, lower cytogenetic response rate and shorter response duration to lenalidomide (LEN).³⁸

Clonal haematopoiesis of indeterminate potential

Somatic mutations seen in myeloid neoplasias have been observed in elderly healthy persons (10%-13% of those aged 70-80 years).³⁹⁻⁴¹ The most frequently affected gene is *DNMT3A*, followed by *TET2*, *ASXL1*, and less often, *JAK2*, *PPM1D*, *SF3B1*, *SRSF2* and *TP53*. Most patients have only one mutation, and generally with variant allele frequency (VAF) of ≤10%. Since individuals examined had no obvious haematological disease, the term 'clonal haematopoiesis of indeterminate potential' (CHIP) was established.⁴² CHIP is

associated with a 13-fold increased risk of developing a haematological neoplasia and a 1.4-fold risk of death also related to an increased incidence of atherosclerotic cardiovascular disease.⁴³

Patients with CHIP and unexplained cytopenia but no morphological evidence for myelodysplasia have been classified as CCUS. Over 30% of patients with unexplained cytopenias appear to have CCUS, with an increased risk of developing myeloid neoplasia depending on the type of mutation.^{37,44}

Flow cytometry

Flow cytometry abnormalities of myeloid precursors may support a diagnosis of MDS, but this method should be used by experts according to published guidelines, and should not be used for the evaluation of the percentage of bone marrow blasts.^{45,46}

Classification

The current WHO classification of MDS¹⁶ divides MDS with <5% blasts into those with single lineage or multilineage dysplasia (Table 4). In MDS with single lineage dysplasia, patients with ring sideroblasts (MDS-RS) have a low AML progression rate and generally have a prolonged overall survival (OS) if *SF3B1* mutation is present and is isolated or at least not associated with poor prognosis mutations such as *RUNX1* mutation. The entity of del(5q) MDS is not defined by morphological criteria but by the presence of del(5q), making cytogenetic analysis mandatory. This classification has recognised entities with germline predisposition (Table 5).⁸ Finally, chronic myelomonocytic leukaemia has been moved to myelodysplastic/myeloproliferative neoplasms.¹⁶

Recommendations

- Diagnosis is based on blood count, marrow aspirate and marrow karyotype [I, A].
- Bone marrow biopsy is recommended at diagnosis [I, A].
- Molecular biology is useful for diagnosis if blood and marrow tests are inconclusive [I, A].
- Flow cytometry of blood and marrow cells is useful for diagnosis in experienced hands [II, B].

STAGING AND RISK ASSESSMENT

The natural course of MDS is highly variable, with survival ranging from a few weeks to many years. Causes of death are mainly related to MDS in higher-risk patients, while a large proportion of patients with lower-risk MDS die of non-MDS causes, i.e. comorbidities associated with the typical age of MDS patients.^{47,48} Median OS is 15-30 months and the 5-year AML progression rate is 25%-35%. Bone marrow failure (infection and haemorrhage) is the leading cause of death before AML progression.⁴⁹

The main risk factors, allowing an individual risk-adapted treatment strategy, are cytogenetic abnormalities, marrow

Table 4. The WHO 2016 classification of MDS¹⁶

Name	Dysplastic lineages	Cytopaenias ^a	Ring sideroblasts as % of marrow erythroid elements	BM and PB blasts	Cytogenetics by conventional karyotype analysis
MDS-SLD	1	1 or 2	<15%/<5% ^b	BM <5%, PB <1%, no Auer rods	Any, unless fulfils criteria for MDS with isolated del(5q)
MDS-MLD	2 or 3	1-3	<15%/<5% ^b	BM <5%, PB <1%, no Auer rods	Any, unless fulfils criteria for MDS with isolated del(5q)
MDS-RS-SLD	1	1 or 2	≥15%/≥5% ^b	BM <5%, PB <1%, no Auer rods	Any, unless fulfils criteria for MDS with isolated del(5q)
MDS-RS-MLD	2 or 3	1-3	≥15%/≥5% ^b	BM <5%, PB <1%, no Auer rods	Any, unless fulfils criteria for MDS with isolated del(5q)
MDS with isolated del(5q)	1-3	1-2	None or any	BM <5%, PB <1%, no Auer rods	Del(5q) alone or with one additional abnormality except -7 or del(7q)
MDS-EB-1	0-3	1-3	None or any	BM 5%-9% or PB 2%-4%, no Auer rods	Any
MDS-EB-2	0-3	1-3	None or any	BM 10%-19% or PB 5%-19% or Auer rods	Any
MDS-U with 1% blasts	1-3	1-3	None or any	BM <5%, PB = 1%, no Auer rods	Any
MDS-U with single lineage dysplasia and pancytopenia	1	3	None or any	BM <5%, PB <1%, no Auer rods	Any
MDS-U based on defining cytogenetic abnormality	0	1-3	<15% ^d	BM <5%, PB <1%, no Auer rods	MDS-defining abnormality
Refractory cytopaenia of childhood	1-3	1-3	None	BM <5%, PB <2%	Any

BM, bone marrow; MDS, myelodysplastic syndromes; MDS-EB, myelodysplastic syndrome with excess blasts; MDS-MLD, myelodysplastic syndrome with multilineage dysplasia; MDS-RS-MLD, myelodysplastic syndrome with ring sideroblasts with multilineage dysplasia; MDS-RS-SLD, myelodysplastic syndrome with ring sideroblasts with single lineage dysplasia; MDS-SLD, myelodysplastic syndrome with single lineage dysplasia; MDS-U, myelodysplastic syndrome unclassifiable; PB, peripheral blood; WHO, World Health Organization.

^a Cytopaenias defined as haemoglobin <10 g/dl, platelet count <100 × 10⁹/l and absolute neutrophil count <1.8 × 10⁹/l; rarely, MDS may present with mild anaemia or thrombocytopenia above these levels. PB monocytes must be <1 × 10⁹/l.

^b If *SF3B1* mutation is present.

^c 1% PB blasts must be recorded on at least two separate occasions.

^d Cases with ≥15% ring sideroblasts have significant erythroid dysplasia and are classified as MDS-RS-SLD.

Reprinted with permission.¹⁶

blasts percentage and number and severity of cytopaenias. The IPSS¹⁸ and IPSS-R¹⁹ (Table 6) are based on these variables. They have been validated in external series⁵⁰ and their use is strongly recommended for planning treatment⁵¹ [I, A]. The IPSS-R is used to stratify patients into five risk

groups (very low-, low-, intermediate-, high- and very high-risk), with clear differences in OS and risk of progression to AML,¹⁹ and offers better prognostic classification than the IPSS. For therapeutic purposes, the term 'lower-risk' MDS generally applies to cases with IPSS-R up to 3.5 including very low- and low-risk and part of intermediate-risk IPSS-R patients. 'Higher-risk' MDS includes patients with IPSS-R ≥4.0, i.e. high- and very high-risk, and the remaining intermediate-risk IPSS-R patients. There is obviously some uncertainty for intermediate-risk IPSS-R patients where the treatment approach should take additional factors into account.

Other factors for prognosis and treatment choice, particularly for intermediate-risk patients, include patient-related characteristics such as age,¹⁹ Eastern Cooperative Oncology Group performance status (PS)¹⁹ and comorbidities.⁵² Other disease-related factors include multilineage dysplasia, red blood cell transfusion dependence (RBC-TD), serum LDH, bone marrow fibrosis,⁵² flow cytometry immunophenotyping⁵³ and increasingly, gene somatic mutation profiling and copy number.^{2,35,54} Data on the independent prognostic impact of somatic mutations are still lacking and so their use in routine practice to guide therapeutic decisions is not recommended [II, B] except for *SF3B1* in lower-risk MDS, *TP53* mutation in lower-risk MDS with del(5q) or MDS with complex karyotype [I, A] and *IDH1* and *IDH2* mutations as these can be targeted by specific

Table 5. Myeloid neoplasms with inherited germline predisposition¹⁶

Myeloid neoplasms with germline predisposition without a pre-existing disorder or organ dysfunction	<ul style="list-style-type: none"> • AML with germline <i>CEBPA</i> mutation • Myeloid neoplasms with germline <i>DDX41</i> mutation^a
Myeloid neoplasms with germline predisposition and pre-existing platelet disorders	<ul style="list-style-type: none"> • Myeloid neoplasms with germline <i>RUNX1</i> mutation^a • Myeloid neoplasms with germline <i>ANKRD26</i> mutation^a • Myeloid neoplasms with germline <i>ETV6</i> mutation^a
Myeloid neoplasms with germline predisposition and other organ dysfunction	<ul style="list-style-type: none"> • Myeloid neoplasms with germline <i>GATA2</i> mutation • Myeloid neoplasms associated with BM failure syndromes • Myeloid neoplasms associated with telomere biology disorders • Juvenile myelomonocytic leukaemia associated with neurofibromatosis, Noonan syndrome or Noonan syndrome-like disorders • Myeloid neoplasms associated with Down syndrome^a

AML, acute myeloid leukaemia; BM, bone marrow.

^a Lymphoid neoplasms also reported.

Reprinted with permission.¹⁶

Table 6. IPSS-R for MDS¹⁹

Prognostic characteristic	Points						
	0	0.5	1	1.5	2	3	4
Cytogenetic risk category ^a	Very good		Good		Intermediate	Poor	Very poor
Blasts in bone marrow (%)	≤2		>2-5		5-10	>10	
Haemoglobin (g/dl)	≥10		8-10	<8			
Platelet count (×10 ⁹ /l)	≥100	50-100	<50				
Absolute neutrophil count (×10 ⁹ /l)	≥0.8	<0.8					
IPSS-R risk group	Score		Median OS (years)		Median time to 25% AML evolution (years)		
Very low	≤1.5		8.8		NR		
Low	>1.5-3		5.3		9.4		
Intermediate	>3-4.5		3.0		2.5		
High	>4.5-6		1.6		1.7		
Very high	>6		0.8		0.7		

AML, acute myeloid leukaemia; IPSS-R, revised international prognostic scoring system; MDS, myelodysplastic syndromes; NR, not reached; OS, overall survival.

^a Very good: -Y and del(11q) as single abnormalities; good: normal, del(5q), del(12p) and del(20q) as single abnormalities, double abnormalities including del(5q); intermediate: del(7q), +8, +19, i(17q) and any other single abnormalities, any other double abnormalities; poor: -7 and inv(3)/t(3q)/del(3q) as single abnormalities, double abnormalities including -7/del(7q), complex (3 abnormalities); very poor: >3 abnormalities.

Reprinted with permission.¹⁹

inhibitors. The diagnostic strategy may be adapted according to the availability of new targeted therapies.

Finally, most prognostic factors in MDS have been established independently of treatment, particularly in cohorts receiving mostly supportive care. With the availability of treatments having an impact on disease evolution, including allo-SCT and hypomethylating agents (HMAs), factors that may be prognostic in patients treated with these interventions are starting to be defined.

Recommendations

- IPSS-R is required for prognostic evaluation [I, A].
- Molecular analysis may add prognostic value [II, B], especially for *TP53* [in del(5q) MDS] and *SF3B1* mutations in patients with <5% blasts [I, A].

TREATMENT

Response criteria in MDS

Response criteria to treatment in MDS are based on recommendations of an international working group (IWG 2006).⁵⁵ These criteria define (i) responses aimed at modifying the disease course [mainly allo-SCT, intensive ChT and HMAs, including complete remission (CR), partial remission (PR), stable disease (SD) and progression], and (ii) improvement of cytopaenias ('haematological improvement' or HI) in one or several lineages (erythroid, platelet and neutrophil responses). These recommendations are particularly adapted to treatments which, like growth factors, can improve these cytopaenias with no obvious effect on the disease course. While CR and PR are generally associated with improvement in cytopaenias, the latter type of response is often defined as 'stable disease with HI (on the erythroid and/or platelet and/or neutrophil) lineage'. An international group of MDS experts has recently proposed a revision to these criteria (IWG 2018).⁵⁶

Treatment of higher-risk MDS patients

Higher-risk MDS carries a major risk of progression to AML and short survival, and treatment should aim to modify the disease course, with options including allo-SCT, HMAs and, less frequently, ChT (mainly intensive anthracycline-cytarabine combinations).⁵⁷ In most patients with higher-risk MDS, HMAs are the first-line reference treatment (Figure 2).

HMAs. In patients with higher-risk MDS without major comorbidities who are not immediately eligible for allo-SCT, azacitidine is recommended [I, A]. The use of azacitidine may be preferable compared with the alternative HMA, decitabine, since findings from a randomised trial showed that azacitidine was superior to conventional care regimens [i.e. supportive care, low-dose cytarabine (LDAC) and AML-like ChT],^{58,59} whereas there was no clear survival advantage with decitabine over conventional treatment in two phase III trials. Of note, while the pivotal AZA-001 phase III trial⁵⁸ suggested that azacitidine could yield a median OS of 24 months in higher-risk MDS, most large 'real life' studies have suggested a median OS of 15-18 months, a difference often observed between patients included in clinical trials versus all-comers.⁶⁰

As most patients only respond to azacitidine after several courses, at least six courses are recommended as part of the following schedule: azacitidine 75 mg/m²/day subcutaneously for 7 consecutive days every 28 days [II, B]. However, '5-2-2' regimens (from Monday to Friday, and Monday and Tuesday of the following week) are often easier to apply and are considered acceptable.

Besides induction of CR and PR, achievement of HI according to IWG 2006 criteria is associated with a prolongation of survival compared with supportive care or LDAC [III, B].⁶¹

The use of 2-6 cycles of azacitidine is quite common before haematopoietic stem cell transplantation (HSCT) to reduce blasts in bone marrow or for logistical reasons (to

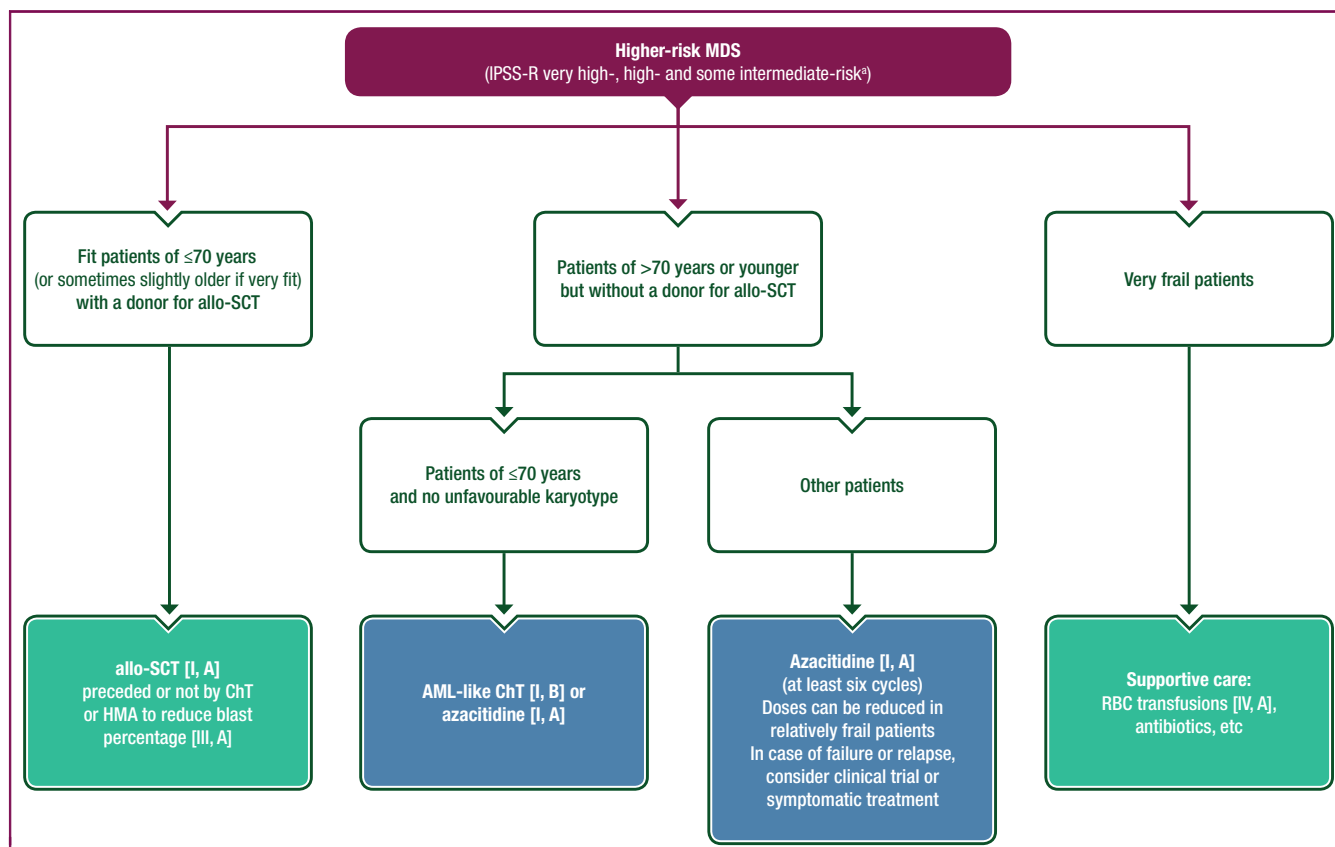


Figure 2. Treatment algorithm for higher-risk MDS.

allo-SCT, allogeneic stem cell transplant; AML, acute myeloid leukaemia; ChT, chemotherapy; HMA, hypomethylating agent; IPSS-R, revised international prognostic scoring system; MDS, myelodysplastic syndromes; RBC, red blood cell.

^a For IPSS-R intermediate-risk MDS patients, whether they should initially receive treatment for lower-risk MDS or higher-risk MDS is also based on other factors including age, comorbidities, importance of cytopenias, somatic mutations, effect of first-line treatment, etc.

allow time to find an adequate SCT donor). Its potential risks and benefits over no treatment are currently being evaluated in clinical trials [III, B].

AML-like ChT. AML-like intensive ChT has a limited indication in patients with higher-risk MDS. In particular, MDS patients with an unfavourable karyotype show few CRs and shorter CR duration than those with a normal karyotype.⁶²⁻⁶⁴ It can be envisaged for fit patients (generally <70 years of age) without unfavourable cytogenetics (especially patients with a normal karyotype) and >10% marrow blasts, preferably as a bridge to allo-SCT [I, B].

Suggested regimens with equivalent efficacy are combinations of cytarabine with idarubicin, or fludarabine [IV, B].⁵⁷

A direct comparison between AML-like ChT and azacitidine has been carried out in a small number of MDS patients in one randomised phase III trial. This suggested a superiority of the HMA in terms of survival (but not CR rate) without reaching statistical significance, but the number of patients was too small to draw any definitive conclusions.⁵⁸ A retrospective comparison of AML-like ChT versus decitabine was carried out in two groups of matched MDS patients, and while CR rates were equivalent, a survival advantage was seen only with the use of an HMA.⁶⁵

Recently, CPX 351, an encapsulated form of daunorubicin and cytarabine, proved superior to conventional

daunorubicin and cytarabine in AML with MDS features and AML post-MDS (AML with myelodysplasia-related changes according to WHO 2016 classification¹⁶), and it is approved by the Food and Drug Administration (FDA) and the European Medicines Agency (EMA) in those AML subsets, including therapy-related AML.⁶⁶ Whether it is also superior to conventional ChT in higher-risk MDS needs to be demonstrated.

Low-dose ChT. LDAC (generally cytarabine 20 mg/m²/day for 10-14 days/4 weeks) was inferior to azacitidine (in terms of response and survival) in a randomised phase III study,⁵⁸ especially in patients with unfavourable cytogenetics.^{67,68}

New treatments (especially in combination with an HMA).

Clinical trials are testing whether the addition of another drug to azacitidine can improve outcomes, but so far no combination has demonstrated a clear advantage over azacitidine alone, although some are promising in elderly patients with AML treated with an HMA-based approach.⁶⁹⁻⁷¹ New HMAs with a longer half-life (potentially increasing the hypomethylating effect) are currently being tested in MDS (and AML), especially oral drugs.^{72,73}

IPSS higher-risk MDS patients who fail to respond to HMAs have a very poor survival (median <6 months) unless

they are potentially eligible for allo-SCT.⁷⁴ The recommended approach is to enrol these patients into a clinical trial with investigational agents [IV, B].⁷⁴

The IDH1 inhibitor, ivosidenib, and IDH2 inhibitor, enasidenib, have shown significant activity in AML with the respective mutations and are approved by the FDA in those settings.^{75,76} They are also being tested in clinical trials in MDS, which carries *IDH1/2* mutations in around 15% of cases. Of note, those mutations may be absent at HMA onset and appear later in the disease course at HMA failure. The bcl2 inhibitor, venetoclax, is approved by the FDA in combination with an HMA in elderly patients with AML and is also being tested in higher-risk MDS, especially in combination with azacitidine.⁷¹

allo-SCT. allo-SCT remains the only potentially curative treatment of higher-risk MDS patients [I, A], but its major obstacle is age as most MDS patients are >70 years. Comorbidity, age, IPSS-R score, cytogenetics, mutations including *TP53* mutation,⁷⁷ conditioning regimen and donor selection are predictors of post-transplant outcome^{78,79} and should be considered during the decision process. All patients with higher-risk MDS up to 70 years (although particularly 'fit' patients aged >70 years can sometimes be considered) should be evaluated for allo-SCT eligibility at diagnosis and whenever required during the disease course. Human leukocyte antigen (HLA)-identical (or single antigen mismatched) siblings or matched unrelated individuals should be considered as suitable donors [I, A].⁷⁹ Haploidentical donors and, less often, cord blood are now widely used as alternative donors with comparable outcomes [II, B].

Regarding conditioning regimens, whether reduced-intensity conditioning (RIC) or myeloablative approaches should be used is often disputed. The relapse risk seems to be higher in patients receiving RIC; therefore, patients aged <55 years and without comorbidities should probably be offered myeloablative HSCT [II, B].

It is debated whether treatment aimed at reducing the blast count should be carried out before allo-SCT with AML-like ChT or HMAs. This is generally considered when marrow blasts are >10%, especially for non-myeloablative allo-SCT [III, A].⁸⁰

It is now widely accepted that systemic iron overload contributes to negative outcomes after allo-HSCT in MDS.⁸¹ Elevated labile plasma iron levels before or during allo-HSCT predict an increased incidence of infection-related non-relapse mortality and a decreased OS in patients with AML or MDS. Therefore, eligible patients should receive appropriate iron chelation, at least until the onset of conditioning treatment [III, B].^{81,82}

Treatment of lower-risk MDS

In lower-risk MDS, the risk of AML progression is lower, and around half of elderly patients die of causes other than MDS or AML. The main priority is therefore generally the treatment of cytopenias, mainly of anaemia (usually the predominant cytopenia), and improvement in quality of life

(QoL). Still, some of these patients may be identified as having a poorer prognosis, either by their IPSS-R score¹⁹ or by other biological characteristics like somatic mutations⁸³ or subsequently by their resistance to first-line treatment,⁸⁴ and may benefit from treatments generally applied to higher-risk MDS [IV, C]. This applies particularly to patients with an intermediate IPSS-R (Figure 3).

Anaemia due to failure of specific treatments often requires repeated RBC transfusions, leading to potential iron overload.⁵⁸

Treatment of anaemia.

RBC transfusions or drugs? Chronic RBC transfusions can be considered as the sole treatment of anaemia in lower-risk MDS as very few drugs are approved in this setting and none have demonstrated a survival improvement except ESA. However, repeated RBC transfusions are associated with chronic anaemia, leading to excessive morbidity, and they cannot completely correct impaired QoL.^{85,86} Iron overload due to RBC transfusions may also be deleterious to various organs.^{85,87} Receiving ESAs has no impact on progression to AML but is an independent, favourable prognostic factor for survival [IV, B].⁸⁸⁻⁹¹

First-line treatment of anaemia in lower-risk MDS.

Patients without *del(5q)*: ESAs. ESAs, i.e. recombinant EPO or darbepoetin (DAR), remain the first choice treatment of anaemia in most lower-risk MDS without *del(5q)*.⁸⁸ Weekly doses of 30 000-80 000 units of EPO or 150-300 µg of DAR injection yield 40%-60% erythroid responses according to IWG 2006 response criteria⁵⁵ when the baseline EPO level is low (<200-500 U/l) and transfusion requirement is absent or limited since low baseline serum EPO level and low or no RBC transfusion requirement are the two main prognostic factors of response to ESAs [I, A].^{86,88-90,92,93}

Efficacy of ESAs can be improved by the addition of granulocyte colony-stimulating factor (G-CSF),^{90,94} but there are no data showing that one ESA is superior to another. Only one ESA, i.e. EPO alpha (and its biosimilars), is formally approved by the EMA for lower-risk MDS patients with serum EPO levels below 200 U/l.⁹²

Responses to ESA occur within 8-12 weeks of treatment. Median duration of response is 20-24 months.^{86,88-90,92}

Lower-risk MDS with *del(5q)*: LEN. Anaemia of lower-risk MDS with *del(5q)* is associated with lower response rates and significantly shorter responses to ESA compared with other lower-risk MDS.⁹⁵ However, it responds to LEN in 60%-65% of patients, with a median duration of RBC transfusion independence (RBC-TI) of 2-2.5 years [I, A].^{96,97} The recommended initial dose is 10 mg/day for 3 weeks every 4 weeks.⁹⁸ Cytogenetic response (CyR) is achieved in 50%-75% of patients (including 30%-45% complete CyR). *TP53* gene mutations, found in ~20% of lower-risk MDS with *del(5q)*, confer resistance to LEN and a higher risk of AML progression.³⁸ Thus, patients with *del(5q)* lower-risk MDS harbouring or developing a *TP53* mutation (during LEN treatment) require intensified disease surveillance,

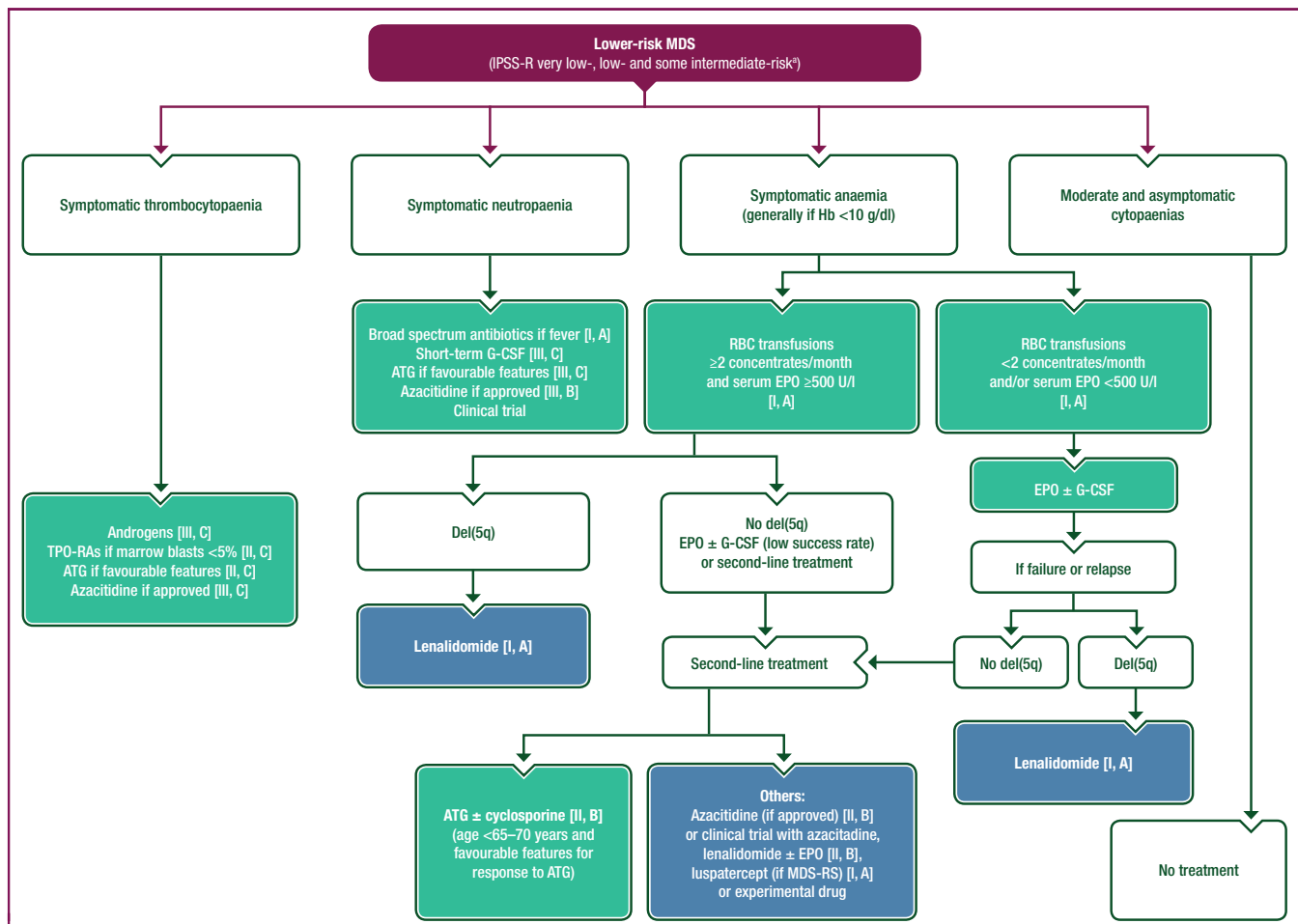


Figure 3. Treatment algorithm for lower-risk MDS.

ATG, antithymocyte globulin; EPO, erythropoietin; G-CSF, granulocyte colony-stimulating factor; Hb, haemoglobin; IPSS-R, revised international prognostic scoring system; MDS, myelodysplastic syndromes; MDS-RS, myelodysplastic syndrome with ring sideroblasts; RBC, red blood cell; TPO-RA, thrombopoietin receptor agonist.

* For IPSS-R intermediate-risk MDS patients, whether they should initially receive treatment for lower-risk MDS or higher-risk MDS is also based on other factors including age, comorbidities, importance of cytopaenias, somatic mutations, effect of first-line treatment, etc.

including regular bone marrow assessment of clonal evolution [III, A]. Patients with a chromosomal abnormality in addition to del(5q) appear to have similar outcomes to those with isolated del(5q), except for some additional abnormalities like +8,⁹⁷ -7 or del(7q), or when there are two or more additional abnormalities, but those patients are not classified as lower-risk MDS.^{96,97}

Grade 3 or 4 neutropaenia and thrombocytopenia, seen in ~60% of patients during the first weeks of treatment, constitute the most common adverse events of LEN.^{96,97} Close monitoring of blood counts is therefore required during this period, with dose reduction and/or addition of G-CSF if required.

In the EU, LEN is approved for the treatment of lower-risk MDS with del(5q) and RBC-TD only after failure or ineligibility to ESA.

Second-line treatments for anaemia in lower-risk MDS. Patients without del(5q). Treatment after ESA failure (primary or secondary resistance) in patients who remain with IPSS low or intermediate-1 MDS is disappointing, with most patients eventually requiring long-term RBC transfusions. Second-line

treatments currently used, but not approved in most countries, include anti-thymocyte globulin (ATG), HMAs and LEN.

ATG, ± cyclosporine, can yield an erythroid response (associated with response of other cytopaenias, especially thrombocytopenia) in 25%–40% of patients [II, B].^{99–101} ATG results are better in relatively young (<65 years), lower-risk MDS patients with a recent RBC transfusion history, normal karyotype (or possibly trisomy 8), no excess blasts and HLA DR15 genotype, and in patients with thrombocytopenia, a small PNH clone or with marrow hypocellularity [III, B].¹⁰² Therefore, this treatment is generally proposed to a minority of patients. As in aplastic anaemia, horse ATG appears to achieve better results than rabbit ATG.¹⁰¹

HMAs yield RBC-TI in 20%–40% of patients,^{103,104} and may also improve other cytopaenias in lower-risk MDS [III, B].¹⁰⁵ They are approved in this setting in several countries, including the United States, but not in Europe.

LEN yields an RBC-TI in 25%–30% of lower-risk MDS patients without del(5q) resistant to ESA,^{106,107} and the combination of LEN and ESA may yield higher RBC-TI rates than LEN alone in this setting [I, B].¹⁰⁸ However, LEN is not approved in non-del(5q) patients.

Luspatercept (ACE-536) has recently shown promising results in RBC transfusion-dependent, lower-risk MDS, with erythroid response and RBC-TI of 63% and 38%, respectively, with limited toxicity in a phase II study, and even better results in patients with MDS-RS or *SF3B1* mutation. Results were confirmed in a phase III placebo-controlled randomised study of luspatercept in RBC transfusion-dependent IPSS-R very low-, low- or intermediate-risk MDS-RS or with *SF3B1* mutation refractory to ESA,¹⁰⁹ and this drug has recently been approved in this setting by the FDA and EMA [I, A].¹¹⁰

Patients with del(5q). Resistance to LEN in lower-risk MDS with del(5q) is associated with a poor prognosis, even if no immediate progression to high-risk MDS is observed. Patients with *TP53* gene mutation may have a particularly poor outcome³⁸ and are considered candidates for approaches that have demonstrated a survival benefit in higher-risk MDS, including HMAs, and whenever possible, allo-SCT [IV, B].¹⁰⁸

Treatment of neutropaenia and thrombocytopenia. In lower-risk MDS, neutropaenia and thrombocytopenia are less frequent than anaemia, and are rarely isolated or profound.

Neutrophils are $<1500/\text{mm}^3$ in only 7% of lower-risk MDS, and neutropaenia is rarely associated with life-threatening infections if no drugs worsening neutropaenia are used. G-CSF can improve neutropaenia in 60%-75% of these cases and can be added to anti-infective drugs [III, C], but its prolonged use has not demonstrated any impact on survival.

Platelets below $50\,000/\text{mm}^3$ are seen in $\sim 30\%$ of low-risk MDS. High-dose androgens can improve thrombocytopenia in one-third of thrombocytopenic lower-risk MDS, but response is generally transient [III, C].^{111,112} The thrombopoietin (TPO) receptor agonist (TPO-RA), romiplostim, at high doses (500-1000 $\mu\text{g}/\text{week}$) yielded a 55% platelet response in a phase II trial in patients with lower-risk MDS and thrombocytopenia. However, in $\sim 15\%$ of patients, a transient rise in marrow blasts and/or the appearance of peripheral blasts was seen which was reversible after drug discontinuation.¹¹³ In a randomised phase II study versus placebo in patients with lower-risk MDS and thrombocytopenia, romiplostim significantly reduced the incidence of severe bleeding and platelet transfusions.¹¹⁴ While there was a suspected increase in AML risk upon first analysis, this was not confirmed by later follow-up.¹¹⁴ Results of a randomised trial in lower-risk MDS patients treated with eltrombopag, an oral TPO-RA, showed a 47% platelet response and a reduction in bleeding events with no obvious safety concerns and no observed rise in marrow blasts.¹¹⁵ TPO-RAs are not approved for MDS in Europe and currently cannot be recommended outside of clinical trials or registries at this time. They should also be restricted to patients without an excess of marrow blasts [II, C].

ATG \pm cyclosporine (in selected cases, as described above) and HMAs achieve platelet response in 35%-40% of cases of lower-risk MDS in addition to erythroid responses [III, C]⁹⁹⁻¹⁰¹ (see Figures 2 and 3).

Supportive care and chelation therapy in MDS

Supportive care is required in all MDS patients at some point in the disease and may be the only long-term treatment for unfit patients and those not responding to the agents described above. In patients requiring repeated RBC transfusions, administration at a sufficiently high haemoglobin threshold is recommended (i.e. at least 8 g/dl, and 9 g/dl or even 10g/dl in cases of comorbidities or poor functional tolerance). A sufficient number of RBC concentrates should be transfused each time, over 2 or 3 days if needed, to increase the haemoglobin level above 10 g/dl and limit the effects of chronic anaemia, especially on QoL [IV, A].

Aside from patients receiving myelosuppressive drugs, prophylactic platelet transfusions are not commonly used. Prophylactic antibiotics and/or G-CSF are not recommended in case of neutropaenia, but rapid onset of broad-spectrum antibiotics is mandatory in case of fever or symptoms of infection [II, A]. Short-term use of G-CSF during severe infections could be useful in neutropaenic patients.

Psychosocial support and contact with patient support groups should be offered.

A debate exists about the deleterious effect of iron overload in MDS patients and the role of iron chelation in those patients. While heart iron overload is a well-documented cause of heart failure in children with thalassaemia,^{116,117} its clinical consequences are less certain in transfused MDS patients, particularly as many have other causes of cardiac morbidity.^{118,119} However, cardiovascular magnetic resonance (CMR) imaging studies show that heart iron overload [reflected by a decrease in T2-star (T2*) CMR imaging] is frequent in patients who have received at least 70-80 RBC concentrates, a frequent situation in low-risk MDS, and that heart T2* <20 milliseconds is associated with decreased left ventricular ejection fraction and a risk of heart failure.¹²⁰ Retrospective studies suggest that adequate chelation in highly-transfused patients may improve their survival [IV, C].^{98,121} The TELESTO trial prospectively examined iron chelation in lower-risk MDS, suggesting a significant improvement in event-free survival in chelated patients.¹²² However, this was a composite endpoint, including survival and cardiac and liver function.

Published recommendations for iron chelation therapy [I, V]¹²³ generally advocate starting chelation in patients with a relatively favourable prognosis (i.e. low- or intermediate-1-risk MDS) who have received 20-60 RBC concentrates, or if serum ferritin rises above 1000-2500 U/l. Potential candidates for allo-SCT should, however, be chelated early. Indeed, although the underlying mechanisms are unclear, it appears that even a relatively moderate iron overload before allo-SCT is associated with increased transplant-related mortality [III, B].^{81,82,124} Chelation may also be strongly recommended in patients with lower-risk MDS who are not candidates for allo-SCT but have signs of major iron overload, including significantly reduced cardiac T2* by MRI imaging [III, B].

Iron chelation is made easier by the availability of oral iron chelators (especially deferasirox) in addition to the classical parenteral deferoxamine. Deferasirox cannot be used in patients with renal failure.¹²⁵ Deferiprone, another oral iron chelator, is currently not approved for use in MDS in most countries because it can also cause neutropaenia in a small number of patients, which is problematic in MDS.¹²⁶

Recommendations

- Azacitidine is recommended in patients with higher-risk MDS without major comorbidities not immediately eligible for allo-SCT [I, A].
- AML-like ChT is recommended for fit patients (generally <70 years of age) with favourable cytogenetics according to IPSS and marrow blasts $\geq 10\%$, preferably as a bridge to allo-SCT [I, B].
- Allo-SCT should be proposed to all higher-risk MDS patients <70 years old without major comorbidities and with a donor [I, A].
- Reducing the marrow blast count before allo-SCT with AML-like ChT or HMAs is generally considered when marrow blasts are $\geq 10\%$, especially for non-myeloablative allo-SCT [III, A].
- ESAs (especially EPO alpha) are recommended for the first-line treatment of anaemia in lower-risk MDS in patients without del(5q) [I, A].
- For transfusion-dependent anaemia of lower-risk MDS with del(5q), LEN is the most effective drug [I, A].
- After ESA failure, ATG (\pm cyclosporine) has efficacy in specific younger patient cohorts of lower-risk MDS [II, B].
- After ESA failure in RBC transfusion-dependent MDS-RS, luspatercept is recommended [I, A].
- Other second-line treatments for anaemia after ESA failure include LEN \pm ESA [II, B] and HMAs [II, B], but they are not approved in Europe for this indication.
- TPO-RAs (romiplostim, eltrombopag) have some efficacy in cases of severe thrombocytopenia but they are not approved in MDS and should only be used in patients with marrow blasts <5% [II, C].
- In patients with transfusion iron overload, iron chelation is strongly recommended in candidates for allo-SCT [III, B].
- In non-transplant candidates with lower-risk MDS, iron chelation is strongly recommended in patients with major iron overload (e.g. significantly reduced cardiac T2*) [III, B], but its use is more controversial in patients without major iron overload [I, V].

PERSONALISED MEDICINE

Most prognostic factors in MDS have been defined irrespective of treatment and it is often unclear if they are predictive of efficacy of a given treatment.

The IPSS and IPSS-R offer a valuable means of patient stratification and have therefore served as a basis for [Figures 2 and 3](#) to summarise treatment recommendations. For example, anaemia of lower-risk MDS often responds to

ESAs, except in case of del(5q) where LEN is very effective. On the other hand, in higher-risk patients, while azacitidine has been shown to improve survival, there are currently limited alternative options (except allo-SCT for a minority of patients).

Consideration of the patient's age, PS, comorbidities, frailty and desire (after adequate information has been provided by the medical team) is also crucial before making any treatment decision.

FOLLOW-UP

Except for specific treatments, follow-up of MDS is largely based on regular blood counts to detect worsening cytopenias [anaemia or severe thrombocytopenia requiring transfusions, or severe neutropaenia mandating preventive measures against infection (e.g. during invasive procedures)] and rapid onset of broad-spectrum antibiotics in case of symptoms of infection.

Bone marrow examination, with or without karyotype, is generally triggered by worsening of cytopenias or the appearance of circulating blasts rather than being systematically carried out at regular intervals.

METHODOLOGY

These Clinical Practice Guidelines were developed in accordance with the ESMO standard operating procedures for Clinical Practice Guidelines development (<http://www.esmo.org/Guidelines/ESMO-Guidelines-Methodology>). The relevant literature has been selected by the expert authors. Levels of evidence and grades of recommendation have been applied using the system shown in [supplementary Table S1](#), available at <https://doi.org/10.1016/j.annonc.2020.11.002>.¹²⁷ Statements without grading were considered justified standard clinical practice by the authors.

ACKNOWLEDGEMENTS

Manuscript editing support was provided by Angela Corstorphine of Kstorfin Medical Communications Ltd; this support was funded by ESMO.

FUNDING

No external funding has been received for the preparation of these guidelines. Production costs have been covered by ESMO from central funds.

DISCLOSURE

PF has received honoraria and/or research support from Celgene, Janssen, AbbVie, Jazz, Novartis, Roche and Aprea; GFS has received honoraria from and/or played an advisory role for AbbVie, Amgen, Böehringer Ingelheim, Celgene, Helsinn Healthcare, Roche, Janssen-Cilag, Novartis, Takeda and Onconova; VS has received honoraria from Astex, Celgene, Novartis, Pfizer, Janssen-Cilag and Takeda; UP has received honoraria and/or research support from Celgene, Janssen, AbbVie, Jazz, Novartis and Amgen; DH has received honoraria from Celgene, Novartis and Takeda, and research

support from Novartis and Celgene; UM has reported honoraria from Celgene, Roche and Amgen.

REFERENCES

- Adès L, Itzykson R, Fenaux P. Myelodysplastic syndromes. *Lancet*. 2014;383(9936):2239-2252.
- Bejar R, Stevenson K, Abdel-Wahab O, et al. Clinical effect of point mutations in myelodysplastic syndromes. *N Engl J Med*. 2011;364(26):2496-2506.
- Yang L, Qian Y, Eksioglu E, et al. The inflammatory microenvironment in MDS. *Cell Mol Life Sci*. 2015;72(10):1959-1966.
- Shen J, Wang S, Zhang YJ, et al. Genome-wide aberrant DNA methylation of microRNA host genes in hepatocellular carcinoma. *Epigenetics*. 2012;7(11):1230-1237.
- Jiang Y, Dunbar A, Gondek LP, et al. Aberrant DNA methylation is a dominant mechanism in MDS progression to AML. *Blood*. 2009;113(6):1315-1325.
- Neukirchen J, Schoonen WM, Strupp C, et al. Incidence and prevalence of myelodysplastic syndromes: data from the Dusseldorf MDS-registry. *Leuk Res*. 2011;35(12):1591-1596.
- Miyazaki Y, Tuechler H, Sanz G, et al. Differing clinical features between Japanese and Caucasian patients with myelodysplastic syndromes: analysis from the International Working Group for Prognosis of MDS. *Leuk Res*. 2018;73:51-57.
- Drazer MW, Kadri S, Sukhanova M, et al. Prognostic tumor sequencing panels frequently identify germ line variants associated with hereditary hematopoietic malignancies. *Blood Adv*. 2018;2(2):146-150.
- Leone G, Fianchi L, Voso MT. Therapy-related myeloid neoplasms. *Curr Opin Oncol*. 2011;23(6):672-680.
- Cardis E, Vrijheid M, Blettner M, et al. Risk of cancer after low doses of ionising radiation: retrospective cohort study in 15 countries. *BMJ*. 2005;331(7508):77.
- Iwanaga M, Hsu WL, Soda M, et al. Risk of myelodysplastic syndromes in people exposed to ionizing radiation: a retrospective cohort study of Nagasaki atomic bomb survivors. *J Clin Oncol*. 2011;29(4):428-434.
- Nisse C, Haguenoer JM, Grandbastien B, et al. Occupational and environmental risk factors of the myelodysplastic syndromes in the North of France. *Br J Haematol*. 2001;112(4):927-935.
- Aksoy M, Ozeris S, Sabuncu H, et al. Exposure to benzene in Turkey between 1983 and 1985: a haematological study on 231 workers. *Br J Ind Med*. 1987;44(11):785-787.
- Rigolin GM, Cuneo A, Roberti MG, et al. Exposure to myelotoxic agents and myelodysplasia: case-control study and correlation with clinicobiological findings. *Br J Haematol*. 1998;103(1):189-197.
- Kuendgen A, Nomdedeu M, Tuechler H, et al. Therapy-related myelodysplastic syndromes deserve specific diagnostic sub-classification and risk-stratification — an approach to classification of patients with t-MDS. *Leukemia*. 2020. <https://doi.org/10.1038/s41375-020-0917-7>.
- Arber DA, Orazi A, Hasserjian R, et al. The 2016 revision to the World Health Organization classification of myeloid neoplasms and acute leukemia. *Blood*. 2016;127(20):2391-2405.
- Valent P, Horny HP, Bennett JM, et al. Definitions and standards in the diagnosis and treatment of the myelodysplastic syndromes: consensus statements and report from a working conference. *Leuk Res*. 2007;31(6):727-736.
- Greenberg P, Cox C, LeBeau MM, et al. International scoring system for evaluating prognosis in myelodysplastic syndromes. *Blood*. 1997;89(6):2079-2088.
- Greenberg PL, Tuechler H, Schanz J, et al. Revised international prognostic scoring system for myelodysplastic syndromes. *Blood*. 2012;120(12):2454-2465.
- Valent P, Horny HP. Minimal diagnostic criteria for myelodysplastic syndromes and separation from ICUS and IDUS: update and open questions. *Eur J Clin Invest*. 2009;39(7):548-553.
- Valent P. ICUS, IDUS, CHIP and CCUS: diagnostic criteria, separation from MDS and clinical implications. *Pathobiology*. 2019;86(1):30-38.
- Bejar R. CHIP, ICUS, CCUS and other four-letter words. *Leukemia*. 2017;31(9):1869-1871.
- Valent P, Orazi A, Steensma DP, et al. Proposed minimal diagnostic criteria for myelodysplastic syndromes (MDS) and potential pre-MDS conditions. *Oncotarget*. 2017;8(43):73483-73500.
- Schemenau J, Baldus S, Anlauf M, et al. Cellularity, characteristics of hematopoietic parameters and prognosis in myelodysplastic syndromes. *Eur J Haematol*. 2015;95(3):181-189.
- Buesche G, Teoman H, Wilczak W, et al. Marrow fibrosis predicts early fatal marrow failure in patients with myelodysplastic syndromes. *Leukemia*. 2008;22(2):313-322.
- Haase D, Germing U, Schanz J, et al. New insights into the prognostic impact of the karyotype in MDS and correlation with subtypes: evidence from a core dataset of 2124 patients. *Blood*. 2007;110(13):4385-4395.
- Boultonwood J, Wainscoat JS. Gene silencing by DNA methylation in haematological malignancies. *Br J Haematol*. 2007;138(1):3-11.
- Shaffer LG, McGowan-Jordan J, Schmid M. *ISCN (2013): An International System for Human Cytogenetic Nomenclature*. Basel: S. Karger; 2013.
- Haferlach C, Rieder H, Lillington DM, et al. Proposals for standardized protocols for cytogenetic analyses of acute leukemias, chronic lymphocytic leukemia, chronic myeloid leukemia, chronic myeloproliferative disorders, and myelodysplastic syndromes. *Genes Chromosomes Cancer*. 2007;46(5):494-499.
- Sole F, Luno E, Sanzo C, et al. Identification of novel cytogenetic markers with prognostic significance in a series of 968 patients with primary myelodysplastic syndromes. *Haematologica*. 2005;90(9):1168-1178.
- Schanz J, Steidl C, Fonatsch C, et al. Coalesced multicentric analysis of 2,351 patients with myelodysplastic syndromes indicates an underestimation of poor-risk cytogenetics of myelodysplastic syndromes in the international prognostic scoring system. *J Clin Oncol*. 2011;29(15):1963-1970.
- Haase D, Stevenson KE, Neuberg D, et al. TP53 mutation status divides myelodysplastic syndromes with complex karyotypes into distinct prognostic subgroups. *Leukemia*. 2019;33(7):1747-1758.
- Neukirchen J, Lauseker M, Hildebrandt B, et al. Cytogenetic clonal evolution in myelodysplastic syndromes is associated with inferior prognosis. *Cancer*. 2017;123(23):4608-4616.
- Bernasconi P, Boni M, Cavigliano PM, et al. Clinical relevance of cytogenetics in myelodysplastic syndromes. *Ann N Y Acad Sci*. 2006;1089:395-410.
- Papaemmanuil E, Gerstung M, Malcovati L, et al. Clinical and biological implications of driver mutations in myelodysplastic syndromes. *Blood*. 2013;122(22):3616-3627.
- Haferlach T, Nagata Y, Grossmann V, et al. Landscape of genetic lesions in 944 patients with myelodysplastic syndromes. *Leukemia*. 2014;28(2):241-247.
- Kwok B, Hall JM, Witte JS, et al. MDS-associated somatic mutations and clonal hematopoiesis are common in idiopathic cytopenias of undetermined significance. *Blood*. 2015;126(21):2355-2361.
- Jadersten M, Saft L, Smith A, et al. TP53 mutations in low-risk myelodysplastic syndromes with del(5q) predict disease progression. *J Clin Oncol*. 2011;29(15):1971-1979.
- Genovese G, Kähler AK, Handsaker RE, et al. Clonal hematopoiesis and blood-cancer risk inferred from blood DNA sequence. *N Engl J Med*. 2014;371(26):2477-2487.
- Jaiswal S, Fontanillas P, Flannick J, et al. Age-related clonal hematopoiesis associated with adverse outcomes. *N Engl J Med*. 2014;371(26):2488-2498.
- Xie M, Lu C, Wang J, et al. Age-related mutations associated with clonal hematopoietic expansion and malignancies. *Nat Med*. 2014;20(12):1472-1478.
- Steensma DP, Bejar R, Jaiswal S, et al. Clonal hematopoiesis of indeterminate potential and its distinction from myelodysplastic syndromes. *Blood*. 2015;126(1):9-16.
- Jaiswal S, Natarajan P, Ebert BL. Clonal hematopoiesis and atherosclerosis. *N Engl J Med*. 2017;377(14):1401-1402.

44. Malcovati L, Galli A, Travaglio E, et al. Clinical significance of somatic mutation in unexplained blood cytopenia. *Blood*. 2017;129(25):3371-3378.
45. Alhan C, Westers TM, Cremers EM, et al. The myelodysplastic syndromes flow cytometric score: a three-parameter prognostic flow cytometric scoring system. *Leukemia*. 2016;30(3):658-665.
46. Duetz C, Westers TM, van de Loosdrecht AA. Clinical implication of multi-parameter flow cytometry in myelodysplastic syndromes. *Pathobiology*. 2019;86(1):14-23.
47. Nachtkamp K, Stark R, Strupp C, et al. Causes of death in 2877 patients with myelodysplastic syndromes. *Ann Hematol*. 2016;95(6):937-944.
48. Dayyani F, Conley AP, Strom SS, et al. Cause of death in patients with lower-risk myelodysplastic syndrome. *Cancer*. 2010;116(9):2174-2179.
49. Sanz GF, Sanz MA, Vallespi T, et al. Two regression models and a scoring system for predicting survival and planning treatment in myelodysplastic syndromes: a multivariate analysis of prognostic factors in 370 patients. *Blood*. 1989;74(1):395-408.
50. Voso MT, Fenu S, Latagliata R, et al. Revised International Prognostic Scoring System (IPSS) predicts survival and leukemic evolution of myelodysplastic syndromes significantly better than IPSS and WHO Prognostic Scoring System: validation by the Gruppo Romano Mielodisplasie Italian Regional Database. *J Clin Oncol*. 2013;31(21):2671-2677.
51. Malcovati L, Hellstrom-Lindberg E, Bowen D, et al. Diagnosis and treatment of primary myelodysplastic syndromes in adults: recommendations from the European LeukemiaNet. *Blood*. 2013;122(17):2943-2964.
52. Della Porta MG, Malcovati L, Boveri E, et al. Clinical relevance of bone marrow fibrosis and CD34-positive cell clusters in primary myelodysplastic syndromes. *J Clin Oncol*. 2009;27(5):754-762.
53. Westers TM, Ireland R, Kern W, et al. Standardization of flow cytometry in myelodysplastic syndromes: a report from an international consortium and the European LeukemiaNet Working Group. *Leukemia*. 2012;26(7):1730-1741.
54. Yoshida K, Sanada M, Shiraishi Y, et al. Frequent pathway mutations of splicing machinery in myelodysplasia. *Nature*. 2011;478(7367):64-69.
55. Cheson BD, Greenberg PL, Bennett JM, et al. Clinical application and proposal for modification of the International Working Group (IWG) response criteria in myelodysplasia. *Blood*. 2006;108(2):419-425.
56. Platzbecker U, Fenaux P, Adès L, et al. Proposals for revised IWG 2018 hematological response criteria in patients with MDS included in clinical trials. *Blood*. 2019;133(10):1020-1030.
57. Estey EH, Thall PF, Cortes JE, et al. Comparison of idarubicin + ara-C-, fludarabine + ara-C-, and topotecan + ara-C-based regimens in treatment of newly diagnosed acute myeloid leukemia, refractory anemia with excess blasts in transformation, or refractory anemia with excess blasts. *Blood*. 2001;98(13):3575-3583.
58. Fenaux P, Mufti GJ, Hellstrom-Lindberg E, et al. Efficacy of azacitidine compared with that of conventional care regimens in the treatment of higher-risk myelodysplastic syndromes: a randomised, open-label, phase III study. *Lancet Oncol*. 2009;10(3):223-232.
59. Gurion R, Vidal L, Gafter-Gvili A, et al. 5-azacitidine prolongs overall survival in patients with myelodysplastic syndrome — a systematic review and meta-analysis. *Haematologica*. 2010;95(2):303-310.
60. Mozessohn L, Cheung MC, Fallahpour S, et al. Azacitidine in the 'real-world': an evaluation of 1101 higher-risk myelodysplastic syndrome/low blast count acute myeloid leukaemia patients in Ontario, Canada. *Br J Haematol*. 2018;181(6):803-815.
61. Gore SD, Fenaux P, Santini V, et al. A multivariate analysis of the relationship between response and survival among patients with higher-risk myelodysplastic syndromes treated within azacitidine or conventional care regimens in the randomized AZA-001 trial. *Haematologica*. 2013;98(7):1067-1072.
62. Knipp S, Hildebrand B, Kundgen A, et al. Intensive chemotherapy is not recommended for patients aged >60 years who have myelodysplastic syndromes or acute myeloid leukemia with high-risk karyotypes. *Cancer*. 2007;110(2):345-352.
63. Fenaux P, Morel P, Rose C, et al. Prognostic factors in adult de novo myelodysplastic syndromes treated by intensive chemotherapy. *Br J Haematol*. 1991;77(4):497-501.
64. de Witte T, Suci S, Verhoef G, et al. Intensive chemotherapy followed by allogeneic or autologous stem cell transplantation for patients with myelodysplastic syndromes (MDSs) and acute myeloid leukemia following MDS. *Blood*. 2001;98(8):2326-2331.
65. Kantarjian HM, O'Brien S, Huang X, et al. Survival advantage with decitabine versus intensive chemotherapy in patients with higher risk myelodysplastic syndrome: comparison with historical experience. *Cancer*. 2007;109(6):1133-1137.
66. Lancet JE, Uy GL, Cortes JE, et al. CPX-351 (cytarabine and daunorubicin) liposome for injection versus conventional cytarabine plus daunorubicin in older patients with newly diagnosed secondary acute myeloid leukemia. *J Clin Oncol*. 2018;36(26):2684-2692.
67. Cheson BD, Simon R. Low-dose ara-C in acute nonlymphocytic leukemia and myelodysplastic syndromes: a review of 20 years' experience. *Semin Oncol*. 1987;14(2 suppl 1):126-133.
68. Fenaux P, Lai JL, Gardin C, et al. Cytogenetics are a predictive factor of response to low dose Ara-C in acute myelogenous leukemia (AML) in the elderly. *Leukemia*. 1990;4(4):312.
69. Sekeres MA, Othus M, List AF, et al. Randomized phase II study of azacitidine alone or in combination with lenalidomide or with vorinostat in higher-risk myelodysplastic syndromes and chronic myelomonocytic leukemia: North American Intergroup Study SWOG S1117. *J Clin Oncol*. 2017;35(24):2745-2753.
70. Prebet T, Sun Z, Figueroa ME, et al. Prolonged administration of azacitidine with or without entinostat for myelodysplastic syndrome and acute myeloid leukemia with myelodysplasia-related changes: results of the US Leukemia Intergroup trial E1905. *J Clin Oncol*. 2014;32(12):1242-1248.
71. DiNardo CD, Pratz K, Pullarkat V, et al. Venetoclax combined with decitabine or azacitidine in treatment-naive, elderly patients with acute myeloid leukemia. *Blood*. 2019;133(1):7-17.
72. Garcia-Manero G, Roboz G, Walsh K, et al. Guadecitabine (SGI-110) in patients with intermediate or high-risk myelodysplastic syndromes: phase 2 results from a multicentre, open-label, randomised, phase 1/2 trial. *Lancet Haematol*. 2019;6(6):e317-e327.
73. Savona MR, Odenike O, Amrein PC, et al. An oral fixed-dose combination of decitabine and cedazuridine in myelodysplastic syndromes: a multicentre, open-label, dose-escalation, phase 1 study. *Lancet Haematol*. 2019;6(4):e194-e203.
74. Prebet T, Gore SD, Esterni B, et al. Outcome of high-risk myelodysplastic syndrome after azacitidine treatment failure. *J Clin Oncol*. 2011;29(24):3322-3327.
75. DiNardo CD, Stein EM, de Botton S, et al. Durable remissions with ivosidenib in IDH1-mutated relapsed or refractory AML. *N Engl J Med*. 2018;378(25):2386-2398.
76. Pollyea DA, Tallman MS, de Botton S, et al. Enasidenib, an inhibitor of mutant IDH2 proteins, induces durable remissions in older patients with newly diagnosed acute myeloid leukemia. *Leukemia*. 2019;33(11):2575-2584.
77. Lindsley RC, Saber W, Mar BG, et al. Prognostic mutations in myelodysplastic syndrome after stem-cell transplantation. *N Engl J Med*. 2017;376(6):536-547.
78. Brand R, Putter H, van Biezen A, et al. Comparison of allogeneic stem cell transplantation and non-transplant approaches in elderly patients with advanced myelodysplastic syndrome: optimal statistical approaches and a critical appraisal of clinical results using non-randomized data. *PLoS One*. 2013;8(10):e74368.
79. Vaughn JE, Scott BL, Deeg HJ. Transplantation for myelodysplastic syndromes 2013. *Curr Opin Hematol*. 2013;20(6):494-500.
80. de Witte T, Bowen D, Robin M, et al. Allogeneic hematopoietic stem cell transplantation for MDS and CMML: recommendations from an international expert panel. *Blood*. 2017;129(13):1753-1762.
81. Armand P, Kim HT, Cutler CS, et al. Prognostic impact of elevated pretransplantation serum ferritin in patients undergoing myeloablative stem cell transplantation. *Blood*. 2007;109(10):4586-4588.

82. Jaekel N, Lieder K, Albrecht S, et al. Efficacy and safety of deferasirox in non-thalassemic patients with elevated ferritin levels after allogeneic hematopoietic stem cell transplantation. *Bone Marrow Transplant.* 2016;51(1):89-95.
83. Bejar R, Stevenson KE, Caughy BA, et al. Validation of a prognostic model and the impact of mutations in patients with lower-risk myelodysplastic syndromes. *J Clin Oncol.* 2012;30(27):3376-3382.
84. Park S, Hamel JF, Toma A, et al. Outcome of lower-risk patients with myelodysplastic syndromes without 5q deletion after failure of erythropoiesis-stimulating agents. *J Clin Oncol.* 2017;35(14):1591-1597.
85. Fenaux P, Rose C. Impact of iron overload in myelodysplastic syndromes. *Blood Rev.* 2009;23(suppl 1):S15-S19.
86. Crawford J, Cella D, Cleeland CS, et al. Relationship between changes in hemoglobin level and quality of life during chemotherapy in anemic cancer patients receiving epoetin alfa therapy. *Cancer.* 2002;95(4):888-895.
87. Roy NB, Myerson S, Schuh AH, et al. Cardiac iron overload in transfusion-dependent patients with myelodysplastic syndromes. *Br J Haematol.* 2011;154(4):521-524.
88. Park S, Grabar S, Kelaidi C, et al. Predictive factors of response and survival in myelodysplastic syndrome treated with erythropoietin and G-CSF: the GFM experience. *Blood.* 2008;111(2):574-582.
89. Jadersten M, Malcovati L, Dybedal I, et al. Erythropoietin and granulocyte-colony stimulating factor treatment associated with improved survival in myelodysplastic syndrome. *J Clin Oncol.* 2008;26(21):3607-3613.
90. Greenberg PL, Sun Z, Miller KB, et al. Treatment of myelodysplastic syndrome patients with erythropoietin with or without granulocyte colony-stimulating factor: results of a prospective randomized phase 3 trial by the Eastern Cooperative Oncology Group (E1996). *Blood.* 2009;114(12):2393-2400.
91. Golshayan AR, Jin T, Maciejewski J, et al. Efficacy of growth factors compared to other therapies for low-risk myelodysplastic syndromes. *Br J Haematol.* 2007;137(2):125-132.
92. Fenaux P, Santini V, Spiriti MAA, et al. A phase 3 randomized, placebo-controlled study assessing the efficacy and safety of epoetin-alpha in anemic patients with low-risk MDS. *Leukemia.* 2018;32(12):2648-2658.
93. Santini V, Schemenau J, Levis A, et al. Can the revised IPSS predict response to erythropoietic-stimulating agents in patients with classical IPSS low or intermediate-1 MDS? *Blood.* 2013;122(13):2286-2288.
94. Hellström-Lindberg E, Gulbrandsen N, Lindberg G, et al. A validated decision model for treating the anaemia of myelodysplastic syndromes with erythropoietin + granulocyte colony-stimulating factor: significant effects on quality of life. *Br J Haematol.* 2003;120(6):1037-1046.
95. Kelaidi C, Park S, Brechignac S, et al. Treatment of myelodysplastic syndromes with 5q deletion before the lenalidomide era; the GFM experience with EPO and thalidomide. *Leuk Res.* 2008;32(7):1049-1053.
96. List A, Dewald G, Bennett J, et al. Lenalidomide in the myelodysplastic syndrome with chromosome 5q deletion. *N Engl J Med.* 2006;355(14):1456-1465.
97. Fenaux P, Giagounidis A, Selleslag D, et al. A randomized phase 3 study of lenalidomide versus placebo in RBC transfusion-dependent patients with low-/intermediate-1-risk myelodysplastic syndromes with del5q. *Blood.* 2011;118(14):3765-3776.
98. Rose C, Brechignac S, Vassilief D, et al. Does iron chelation therapy improve survival in regularly transfused lower risk MDS patients? A multicenter study by the GFM (Groupe Francophone des Myelodysplasies). *Leuk Res.* 2010;34(7):864-870.
99. Sloan EM, Wu CO, Greenberg P, et al. Factors affecting response and survival in patients with myelodysplasia treated with immunosuppressive therapy. *J Clin Oncol.* 2008;26(15):2505-2511.
100. Lim ZY, Killick S, Germing U, et al. Low IPSS score and bone marrow hypocellularity in MDS patients predict hematological responses to antithymocyte globulin. *Leukemia.* 2007;21(7):1436-1441.
101. Stahl M, DeVeaux M, de Witte T, et al. The use of immunosuppressive therapy in MDS: clinical outcomes and their predictors in a large international patient cohort. *Blood Adv.* 2018;2(14):1765-1772.
102. Sauntharajah Y, Nakamura R, Wesley R, et al. A simple method to predict response to immunosuppressive therapy in patients with myelodysplastic syndrome. *Blood.* 2003;102(8):3025-3027.
103. Silverman LR, McKenzie DR, Peterson BL, et al. Further analysis of trials with azacitidine in patients with myelodysplastic syndrome: studies 8421, 8921, and 9221 by the Cancer and Leukemia Group B. *J Clin Oncol.* 2006;24(24):3895-3903.
104. Komrokji R, Swern AS, Grinblatt D, et al. Azacitidine in lower-risk myelodysplastic syndromes: a meta-analysis of data from prospective studies. *Oncologist.* 2018;23(2):159-170.
105. Thépot S, Ben Abdelali R, Chevret S, et al. A randomized phase II trial of azacitidine +/- epoetin-beta in lower-risk myelodysplastic syndromes resistant to erythropoietic stimulating agents. *Haematologica.* 2016;101(8):918-925.
106. Raza A, Reeves JA, Feldman EJ, et al. Phase 2 study of lenalidomide in transfusion-dependent, low-risk, and intermediate-1 risk myelodysplastic syndromes with karyotypes other than deletion 5q. *Blood.* 2008;111(1):86-93.
107. Santini V, Almeida A, Giagounidis A, et al. Randomized phase III study of lenalidomide versus placebo in RBC transfusion-dependent patients with lower-risk non-del(5q) myelodysplastic syndromes and ineligible for or refractory to erythropoiesis-stimulating agents. *J Clin Oncol.* 2016;34(25):2988-2996.
108. Komrokji RS, List AF. Lenalidomide for treatment of myelodysplastic syndromes. *Curr Pharm Des.* 2012;18(22):3198-3203.
109. Fenaux P, Platzbecker U, Mufti GJ, et al. Luspatercept in patients with lower-risk myelodysplastic syndromes. *N Engl J Med.* 2020;382(2):140-151.
110. FDA. FDA approves luspatercept-aamt for anemia in adults with MDS. United States Food and Drug Administration. Available at <https://www.fda.gov/drugs/resources-information-approved-drugs/fda-approves-luspatercept-aamt-anemia-adults-mds>. Accessed June 25, 2020.
111. Hebbbar M, Kaplan C, Caulier MT, et al. Low incidence of specific anti-platelet antibodies detected by the MAIPA assay in the serum of thrombocytopenic MDS patients and lack of correlation between platelet autoantibodies, platelet lifespan and response to danazol therapy. *Br J Haematol.* 1996;94(1):112-115.
112. Bourgeois E, Caulier MT, Rose C, et al. Role of splenectomy in the treatment of myelodysplastic syndromes with peripheral thrombocytopenia: a report on six cases. *Leukemia.* 2001;15(6):950-953.
113. Kantarjian H, Fenaux P, Sekeres MA, et al. Safety and efficacy of romiplostim in patients with lower-risk myelodysplastic syndrome and thrombocytopenia. *J Clin Oncol.* 2010;28(3):437-444.
114. Kantarjian HM, Fenaux P, Sekeres MA, et al. Long-term follow-up for up to 5 years on the risk of leukaemic progression in thrombocytopenic patients with lower-risk myelodysplastic syndromes treated with romiplostim or placebo in a randomised double-blind trial. *Lancet Haematol.* 2018;5(3):e117-e126.
115. Oliva EN, Alati C, Santini V, et al. Eltrombopag versus placebo for low-risk myelodysplastic syndromes with thrombocytopenia (EQoL-MDS): phase 1 results of a single-blind, randomised, controlled, phase 2 superiority trial. *Lancet Haematol.* 2017;4(3):e127-e136.
116. Davis BA, O'Sullivan C, Jarritt PH, et al. Value of sequential monitoring of left ventricular ejection fraction in the management of thalassemia major. *Blood.* 2004;104(1):263-269.
117. Kirk P, Roughton M, Porter JB, et al. Cardiac T2* magnetic resonance for prediction of cardiac complications in thalassemia major. *Circulation.* 2009;120(20):1961-1968.
118. Malcovati L, Germing U, Kuendgen A, et al. Time-dependent prognostic scoring system for predicting survival and leukemic evolution in myelodysplastic syndromes. *J Clin Oncol.* 2007;25(23):3503-3510.
119. Malcovati L, Porta MG, Pascutto C, et al. Prognostic factors and life expectancy in myelodysplastic syndromes classified according to WHO criteria: a basis for clinical decision making. *J Clin Oncol.* 2005;23(30):7594-7603.

120. Jensen PD, Jensen FT, Christensen T, et al. Evaluation of myocardial iron by magnetic resonance imaging during iron chelation therapy with deferoxamine: indication of close relation between myocardial iron content and chelatable iron pool. *Blood*. 2003;101(11):4632-4639.
121. Neukirchen J, Fox F, Kundgen A, et al. Improved survival in MDS patients receiving iron chelation therapy — a matched pair analysis of 188 patients from the Dusseldorf MDS registry. *Leuk Res*. 2012;36(8):1067-1070.
122. Angelucci E, Li J, Greenberg P, et al. Iron chelation in transfusion-dependent patients with low- to intermediate-1-risk myelodysplastic syndromes: a randomized trial. *Ann Intern Med*. 2020;172(8):513-522.
123. Greenberg PL. Myelodysplastic syndromes: iron overload consequences and current chelating therapies. *J Natl Compr Canc Netw*. 2006;4(1):91-96.
124. Platzbecker U, Bornhauser M, Germing U, et al. Red blood cell transfusion dependence and outcome after allogeneic peripheral blood stem cell transplantation in patients with de novo myelodysplastic syndrome (MDS). *Biol Blood Marrow Transplant*. 2008;14(11):1217-1225.
125. Gattermann N, Finelli C, Porta MD, et al. Deferasirox in iron-overloaded patients with transfusion-dependent myelodysplastic syndromes: results from the large 1-year EPIC study. *Leuk Res*. 2010;34(9):1143-1150.
126. Cermak J, Jonasova A, Vondrakova J, et al. Efficacy and safety of administration of oral iron chelator deferiprone in patients with early myelodysplastic syndrome. *Hemoglobin*. 2011;35(3):217-227.
127. Dykewicz CA. Summary of the guidelines for preventing opportunistic infections among hematopoietic stem cell transplant recipients. *Clin Infect Dis*. 2001;33(2):139-144 (adapted from: Gross PA, Barrett TL, Dellinger EP, et al. Purpose of quality standards for infectious diseases. *Clin Infect Dis*. 1994;19(18):1421).